

HOW TO USE YOUR



ADJUSTABLE BARIATRIC BATH BENCH WITH REMOVABLE BACK

Item # 9023

Weight capacity not to exceed 500 lb

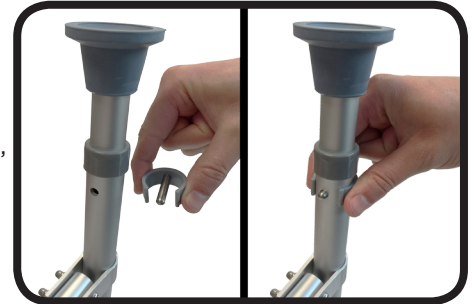


No tools required
Quick Assembly

Easy to follow
step-by-step
instructions

HOW TO ADJUST THE LEGS AND SEAT HEIGHT

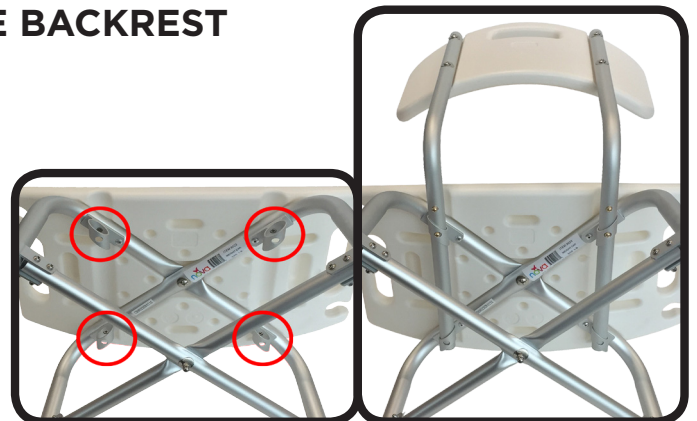
Place the seat face down on a level surface with the legs of the bench facing up and pull out the leg height adjustment clip. Slide the leg to a desired height, align the hole of the leg with the hole of the seat frame, and fully push the center pin of the height adjustment clip through the aligned holes. Ensure that each leg is set to the same height, is stable, and that all push buttons are fully engaged and locked before using.



HOW TO INSTALL AND REMOVE THE BACKREST

Turn and lay the seat of the bench on its side. Slide the backrest tubes into the 4 tube slots under the seat while depressing the brass push buttons on each side of the backrest tubes. Ensure that the brass push buttons “click” and lock into position making sure the backrest is secure.

NOTE: The second set of push buttons on the backrest tubes will allow you to move the backrest closer to the seat if needed.



HOW TO USE

Place the bath bench in the shower or bath tub. Ensure that the bench is stable and not wobbly. Use the slots on the side of the seat as handles to assist in sitting down or getting up from the bench. The two round slots in the front and rear corners of the seat can be used to place a hand held shower set if needed.

NOTE: Use both hands to hold onto the side handles to ensure stability of the bath bench. Using only one hand on either side can topple the bench.



Hand Held Shower Set not included

CARE AND MAINTENANCE

Use non-abrasive cleaner or detergent, rinse with warm water. Abrasive cloths may damage the surface. Regularly inspect the bath bench and its parts for any corrosion, breakage, compression or wear. Regularly check the legs and ensure that they are securely set.

WARNING

Read all instructions carefully and consult with a qualified professional before adjusting to avoid possible injury. **NOVA shall have no responsibility for failures resulting from improper assembly or use.** DO NOT misuse the product.

**Updated December 5, 2016*

WARRANTY INFORMATION

NOVA stands firm on our commitment to providing the highest quality products, as well as exceptional service. This product was built to precise standards and thoroughly inspected prior to shipment. This warranty represents our confidence in the materials and workmanship of our product.

NOVA extends this warranty only to the original purchaser of this product. The warranty does not extend to any subsequent purchaser or owner. The warranty is void upon any sale or transfer of ownership or use by other person. NOVA warrants its products are free from defects in material and workmanship under NORMAL use for the period commencing upon the date of purchase and continuing for the following specified period of time after that date:

Metal Frame - Limited Lifetime Warranty

Non-Metal/Metal parts - One Year Limited Warranty
(rubber tips, plastic or metal hardware)

This warranty does not cover problems due to user negligence, misuse of the product, failure to adhere to product instructions, or normal wear and tear. Items that have been subject to negligent abuse, modified without prior written authorization are not covered within this warranty.

For warranty service, please contact the dealer from whom you purchased your NOVA product. In the event that you do not receive satisfactory service, please call us directly at the number on the bottom front of this sheet. Be prepared to indicate, the nature of the defect, the product serial number, and the name and location of where you purchased the product. You will also be required to provide a receipt of your purchase. Do not return any products to our office without prior consent.

Repair or replacement is the only remedy under this limited warranty. This warranty does not include any labor or shipping charges incurred in replacement part installation or repair of product.

THIS WARRANTY IS EXCLUSIVE AND IN LIEU OF ALL OTHER EXPRESS WARRANTIES, IMPLIED WARRANTIES, IF ANY, INCLUDING THE IMPLIED WARRANTIES OF MERCHANTABILITY AND FITNESS FOR A PARTICULAR PURPOSE. NOVA SHALL NOT BE LIABLE FOR ANY SEQUENTIAL OR INCIDENTAL DAMAGES WHATSOEVER.

Regular cleaning is recommended. Use a non-abrasive cleaner or detergent, rinse with warm water. Abrasive cloths may damage the surface. Regularly inspect your item and its parts for any corrosion, breakage, compression or wear.

IMPORTANT WARNING

FOLLOW ALL DIRECTIONS CAREFULLY BEFORE USE. FAILURE TO DO SO MAY RESULT IN SERIOUS INJURY.

- All 4 legs must be adjusted to the same height (number) so that the bench sits level
- Make sure the legs are secure (height adjustment clips locked completely into hole) before using
- Check before each use
- Use on a level surface
- **DO NOT** stand on the Bath Bench

CONTACT US!
We're here to help

 info@novajoy.com

 1 800 557 6682

CARE • QUALITY • INNOVATION



THE **NOVA** PROMISE

Connect with us!
novajoy.com
facebook: novamedicalprod
twitter: novamedicalprod
twitter: novawalkerstalk
YouTube: NOVA Medical Products